

# ACTIVE TRANSPORTATION CROSSING

In 2016, the City of Mississauga and the Region of Peel began planning for two new Active Transportation (AT) crossings near the QEW and Credit River.

- A north-south crossing of the QEW at Stavebank.
- An east-west crossing of the Credit River near the QEW.

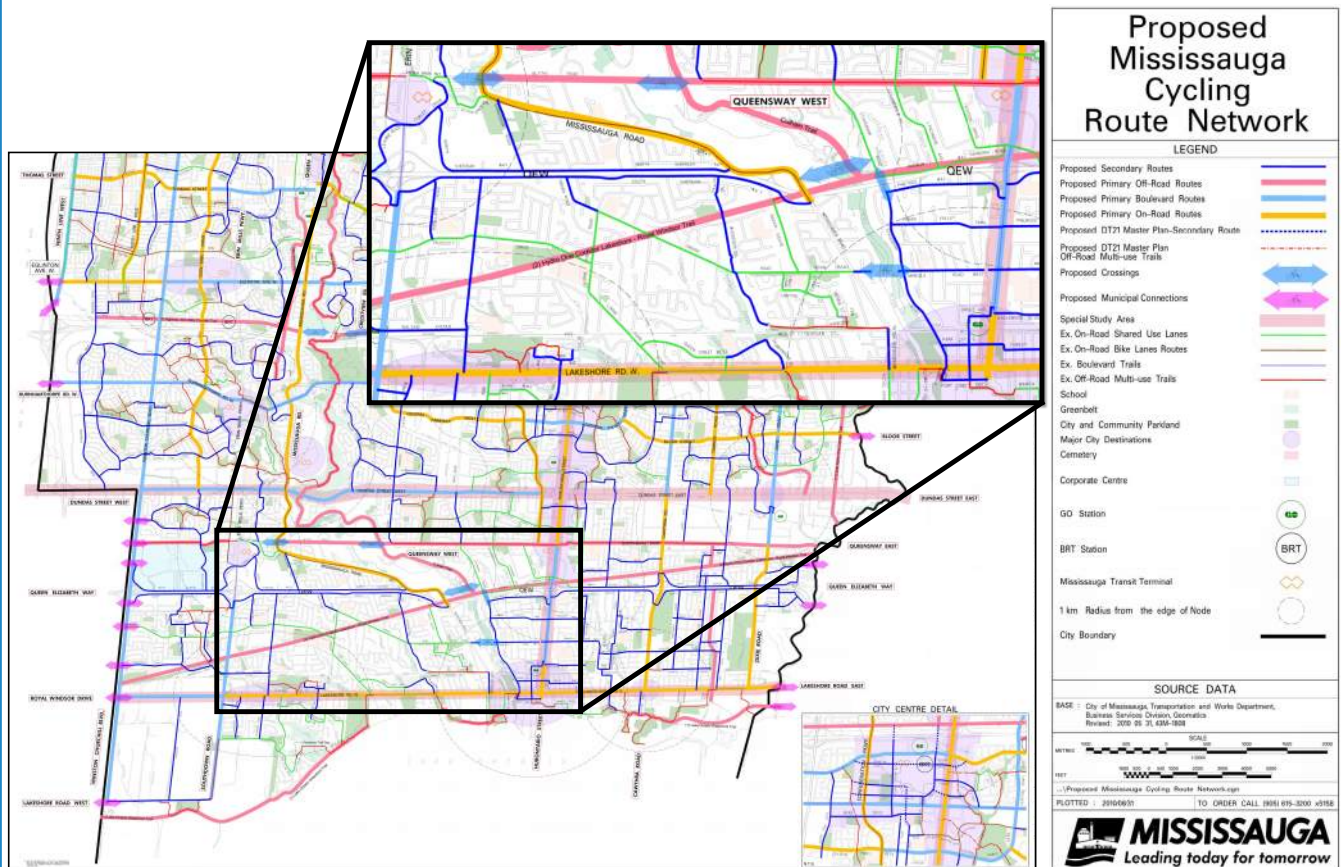
These crossings were identified in the City's 2010 Cycling Master Plan and the Region of Peel's 2012 Active Transportation Plan

The preferred alternative included:

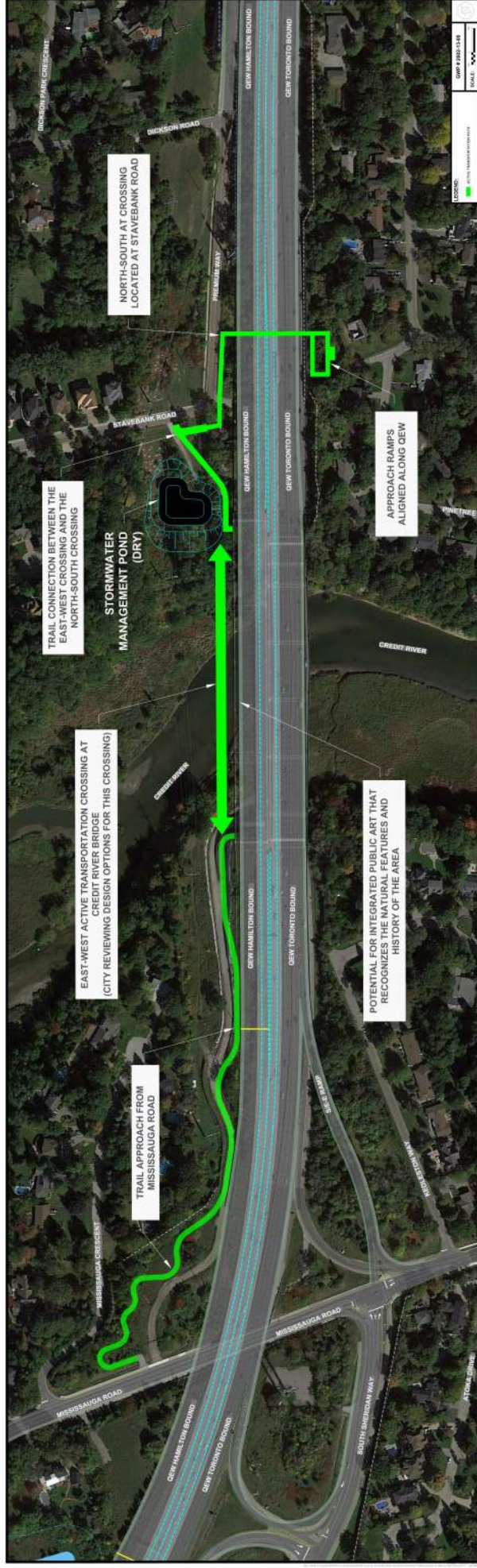
- A north-south crossing of the QEW located at Stavebank Road.
- An east-west crossing of the Credit River.
- Trail connections on the north side of the QEW between Stavebank Road and Mississauga Road.

Next Steps:

- Refine/finalize trail location.
- Refine/finalize east-west crossing design.



# ACTIVE TRANSPORTATION CROSSING



# ACTIVE TRANSPORTATION CROSSING

